

# GUADALAJARA 2025



03-06

APRIL

*Karate 1 – Youth League*  
**GUADALAJARA,**  
**SPAIN 2025**

## CONTENTS

<b>1. WELCOME MESSAGE .....</b>	<b>3</b>
<b>1.1 Greeting from the Head of the host NF .....</b>	<b>3</b>
<b>2. INTRODUCTION .....</b>	<b>4</b>
<b>3. INTRODUCTION KARATE 1- YOUTH LEAGUE GUADALAJARA 2025 .....</b>	<b>4</b>
<b>4. COMPETITION INFORMATION .....</b>	<b>5</b>
<b>4.1 Categories .....</b>	<b>5</b>
4.1.1 Age .....	5
<b>4.2 Prizes .....</b>	<b>6</b>
<b>5. CONTACT INFORMATION.....</b>	<b>6</b>
<b>5.1 Organizers contact details .....</b>	<b>6</b>
<b>5.2 Local Organising Committee contact details.....</b>	<b>6</b>
<b>5.3 WKF Event Supervisor contact.....</b>	<b>6</b>
<b>5.4 Safe Sport contact.....</b>	<b>6</b>
<b>6. WKF APPROVED PROTECTIONS, KARATEGIS &amp; TATAMIS .....</b>	<b>7</b>
<b>7. EVENT SCHEDULE .....</b>	<b>10</b>
<b>8. RANKING .....</b>	<b>12</b>
<b>9. ONLINE REGISTRATION &amp; OFFICIAL ACCREDITATION .....</b>	<b>12</b>
<b>9.1 Athlete Registration .....</b>	<b>13</b>
9.1.1 Entry Fee .....	13
9.1.2 Payment.....	13
<b>9.2 Referees Registration .....</b>	<b>14</b>
<b>9.3 Coaches Registration.....</b>	<b>14</b>
<b>9.4 Official Onsite Accreditation .....</b>	<b>15</b>
<b>10. MANDATORY DOCUMENTS .....</b>	<b>16</b>
<b>11. ANTI DOPING EDUCATION .....</b>	<b>16</b>
<b>12. WKF COACH COURSE PROGRAMME.....</b>	<b>17</b>
<b>12.1 WKF Coach Programme / Accredited Coach Certification Guadalajara 2025 .</b>	<b>17</b>
12.1.1 Schedule .....	17
12.1.2 Online Registration .....	17
12.1.3 Fees .....	18
12.1.4 Payment.....	18

13.	MEDIA .....	18
13.1	Press .....	18
14.	COMPETITION VENUE .....	19
15.	TICKET FOR SPECTATORS .....	19
16.	HQ HOTEL .....	20
17.	Official hotels .....	21
17.1	Hotel Prices .....	27
17.2	Transport Services .....	30
17.3	Meals at the Venue .....	31
18.	VISA REQUIREMENTS .....	31
19.	CITY / COUNTRY INFORMATION .....	31
19.1	About GUADALAJARA .....	31
19.2	How to get to GUADALAJARA .....	33
19.3	Practical Information .....	33
20.	OMISSIONS .....	34

## 1. WELCOME MESSAGE

### 1.1 Greeting from the Head of the host NF

We have the immense pleasure of being able to present, once again, what for us is the third Youth League to be held in Spain, in the incomparable setting offered by the city of Guadalajara.

I invite all athletes, coaches, trainers, family and friends of Karate to participate in this world-class competition, where at the foot of this great city surrounded by history, we can enjoy four days of competition at the highest level with the youngest and most promising athletes of our sport, from all over the world.

The development of these international events is extremely beneficial for Spanish and world Karate. It is only through these events that we can encourage the growth of our grassroots athletes as sportsmen and women.

Let us prove once again to the world that we deserve to return to the Olympic Games. Our sport, our athletes, deserve it. Thanks to the different public institutions for facilitating these great events to come to Spain; Consejo Superior de Deportes and Guadalajara City Council.

Because Guadalajara is a city that is committed to sport, offering all its visitors good sports facilities, history, culture and gastronomy.

Without further ado, you are all welcome to this, your home.



**Antonio Moreno Marquero**

**President Spanish Karate Federation**

## 2. INTRODUCTION

The Karate 1 – Youth League is a competition conceived to highlight the impact of Karate in young ages.

Established under the umbrella of Karate 1 and designed to complete Karate 1-Premier League and Karate 1 - Series A, the Karate 1 - Youth League aims to become a platform for the development of youngsters in their quest to progress in the sport.

The competition was devised to respond to the increasing interest of young competitors to have more options to compete at the highest level and it puts the focus on karatekas aged 12 to 17.

The number of competitors is distributed as follows:

For **Kumite** modality:

- **U21:** limited to a maximum of 64 athletes per category
- **Junior:** limited to a maximum of 80 athletes per category
- **Cadet:** limited to a maximum of 80 athletes per category
- **U14:** limited to a maximum of 64 athletes per category

For **Kata** modality:

- **U21:** limited to a maximum of 80 athletes per category
- **Junior:** limited to a maximum of 96 athletes per category
- **Cadet:** limited to a maximum of 96 athletes per category
- **U14:** limited to a maximum of 64 athletes per category

All members of WKF are permitted to participate.

The WKF [Competition Rules](#) in force will be applied.

## 3. INTRODUCTION KARATE 1- YOUTH LEAGUE GUADALAJARA 2025

The Karate 1 – Youth League (GUADALAJARA) 2025 will be held next 03<sup>rd</sup> - 06<sup>th</sup> April at the **Palacio Multiusos de Guadalajara**: Av. de El Vado, 13, 19005 Guadalajara

## 4. COMPETITION INFORMATION

### 4.1 Categories

Under 21 (18 – 20 years old): 12 categories (10 Kumite + 2 Kata)

- Female Kumite: - 50kg, - 55kg, - 61kg, -68kg, +68kg
- Male Kumite: - 60kg, - 67kg, -75kg, - 84kg, +84kg
- Kata: Female, Male

Junior (16 - 17 years old): 12 categories (10 Kumite + 2 Kata)

- Female Kumite: - 48kg, - 53kg, - 59kg, -66kg, +66kg
- Male Kumite: - 55kg, - 61kg, - 68kg, - 76kg, +76kg
- Kata: Female, Male

Cadet (14 - 15 years old): 11 categories (9 Kumite + 2 Kata)

- Female Kumite: - 47kg, - 54kg, -61kg, +61kg
- Male Kumite: - 52kg, - 57kg, - 63kg, - 70kg, +70kg
- Kata: Female, Male

Under 14 (12 - 13): 11 categories (9 Kumite + 2 Kata)

- Female Kumite: - 42kg, - 47kg, -52kg, +52kg
- Male Kumite: - 40kg, - 45kg, - 50kg, - 55kg, +55kg
- Kata: Female, Male

#### 4.1.1 Age

##### IMPORTANT NOTE

The age limit of competitors for the corresponding category will be the first day of the entire event.

## 4.2 Prizes

The event prizes (medals and trophies) are to be provided by the host.

In each individual category, the first prize will be a gold medal.

The second prize will be a silver medal.

The third prizes will be bronze medals.

## 5. CONTACT INFORMATION

### 5.1 Organizers contact details

Real Federacion Española de Karate

C/ Vicente Muzas, 4

28043 Madrid

Email: [events.assistant@rfek.es](mailto:events.assistant@rfek.es)

### 5.2 Local Organising Committee contact details

Juan Jimenez Santamaría

email: [events.assistant@rfek.es](mailto:events.assistant@rfek.es)

### 5.3 WKF Event Supervisor contact

The WKF Event Supervisor for this Youth League event is Mr. Luca Valdesi. His contact details are as follows:

Email: [lucavaldesi76@gmail.com](mailto:lucavaldesi76@gmail.com)

### 5.4 Safe Sport contact

WKF events must be safe for all athletes and participants and entirely free from any form of non-accidental violence, namely, harassment and abuse. Any such behaviour will not be tolerated.

If you or someone you know has been the victim of abuse or harassment in Karate, get help and report it.

Your first point of contact for any incident at this event is the WKF Event Supervisor, whose contact information you can find detailed above.

Otherwise, any other incident can be reported via the [WKF Official Complaint Form](#) and sent to: [safekarate@wkf.net](mailto:safekarate@wkf.net)

## 6. WKF APPROVED PROTECTIONS, KARATEGIS & TATAMIS

The Karate 1-Youth League complies with the highest level of presentation. In order to guarantee the correct delivery of the event, and to ensure the suitable quality of the tournament, the following brands exclusively are **WKF Approved** for use in the 2025 Karate 1-Youth League Season.

### “WKF Approved” SPORT PROTECTIONS



\*Click on the logos

### CHECK THE COMPULSORY PROTECTIONS FOR THIS COMPETITION

**IMPORTANT:** The Sport Protections with “WKF Approved” license during the period 2020 - 2024, will be accepted until June 30th, 2025.

WKF Helmet and Children Chest Protector for those under 14 years of age are used according to WKF Competition Rules:

<https://wkf.net/karateprotections/protections/children-chest-protector>

<https://www.wkf.net/karateprotections/protections/helmet-protection>



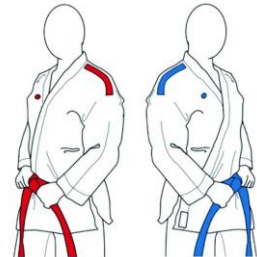
WKF Female Chest Protector for those under 14 years of age female athletes are used according to WKF Competition Rules.



## OFFICIAL KARATEGI KARATE 1 – YOUTH LEAGUE

Kumite and Kata karategis with the brand name embroidered on the shoulders in **RED** or **BLUE** are of **MANDATORY** use in Karate 1- Youth League tournaments.

The authorized companies to use these karategis models are:



ADIDAS

ARAWAZA

BESTSPORT

BUDO-NORD

DAEDO

HAYASHI

PUNOK

MOOTO

SMAI

TOKAIDO

WACOKU

WESING

FUJIMAE

KO

KUROBUSHI

SHUREIDO

TUSAH

\*Click on the logos

**IMPORTANT:** The Karategis with “WKF Approved” license during the period 2020 - 2024, will be accepted until June 30th, 2025.

## “WKF Approved” DISTRIBUTORS ASSISTANCE

Click on the image to visit the distributors by countries.



“WKF Approved” TATAMIS

**ishii**

**PROGNOME**  
TATAMI BY TROCELLEN

**TaiShan**

**TATAMIX**  
STORE

**WESING** 九日山

\*Click on the logos

## 7. EVENT SCHEDULE

THERE WILL BE 3 ACCREDITATION DATES AND 4 WEIGH-IN DATES  
THE WEIGH-IN IS MANDATORY. IN THE EVENT THAT IT IS NOT EXECUTED, THE  
INSCRIPTION WILL BE CANCELLED

WEDNESDAY 02/04 2025	ACTIVITY	PLACE
10:00-18:00	<b>Official Accreditation (For All Categories)</b>	TBD
14:00-18:00	<b>Weigh-in (Only for U21 Category)</b>	TBD
17:00-18:30	Accredited Coach Briefing	TBD
19:00-20:00	Coaching Meeting & Draws	TBD
19:30-20:30	Referee Briefing	TBD
THURSDAY 03/04 2025	ACTIVITY	PLACE
10:00-14:00	<b>Additional Accreditation (Only For U14, Cadet, Junior Categories)</b>	TBD
10:00-14:00	<b>Weigh-in (Only for Junior Category)</b>	TBD
FRIDAY 04/04 2025	ACTIVITY	PLACE
10:00-14:00	<b>Additional Accreditation (For U14, Cadet Categories)</b>	TBD
10:00-14:00	<b>Weigh-in (Only for Cadet Category)</b>	TBD
SATURDAY 05/04 2025	ACTIVITY	PLACE
10:00-14:00	<b>Weigh-in (Only for U14 Category)</b>	TBD

## Competition Schedule – Palacio Multiusos de Guadalajara

<b>Thursday, 03/04 09:00</b>	<u>Eliminations &amp; Repechages <b>U21</b></u> Kata Individual Male/Female Kumite Individual, Male (-60kg, -67kg, -75kg, -84kg, +84 Kg) Kumite Individual, Female (-50kg, -55kg, -61kg, -68kg, +68kg) <b>Finals U21</b>
<b>Friday, 04/04 09:00</b>	<u>Eliminations &amp; Repechages <b>Junior</b></u> Kata Individual Male/Female Kumite Individual, Male (- 55kg, - 61kg, - 68kg, - 76kg, +76kg) Kumite Individual, Female (- 48kg, - 53kg, -59kg, - 66kg, +66kg) <b>Finals Junior</b>
<b>Saturday, 05/04 09:00</b>	<u>Eliminations &amp; Repechages <b>Cadet</b></u> Kata Individual Male/Female Kumite Individual, Male (- 52kg, - 57kg, - 63kg, - 70kg, +70kg) Kumite Individual, Female (- 47kg, - 54kg, <b>-61, +61kg</b> ) <b>Finals Cadet</b>
<b>Sunday, 06/04 09:00</b>	<u>Eliminations &amp; Repechages <b>U14</b></u> Kata Individual Male/Female Kumite Individual, Male (-40kg, -45kg, -50kg, -55kg, +55kg) Kumite Individual, Female (-42kg, -47kg, -52kg, +52kg) <b>Finals U14</b>

**This final Competition Program will be available on the WKF website after online registration closes** in order to adequate it to the final number of athletes participants.

Only the appointed categories will be allowed to stay in the stadium during the authorized timetables.

Detailed information will be communicated at due time.

**Competition Venue: Palacio Multiusos de Guadalajara, Address: Av. de El Vado, 13, 19005 Guadalajara**

## 8. RANKING

Competitors can earn ranking points in every Karate 1 event according to the official WKF Ranking Criteria, point 3.2 of the WKF World Ranking Rules. For more information about ranking rules click [here](#).

The [current ranking](#) is based on a dynamic file, getting updated at the beginning of each month and after each event on the [WKF Event Calendar](#).

## 9. ONLINE REGISTRATION & OFFICIAL ACCREDITATION

**Registration in a Youth League event must be processed ONLINE.**

The registration will be validated once online payment is completed through the payment platform.

**No registration will be accepted after the official online registration deadline.**  
**Any requests after that will be declined.**

**Onsite registrations will NOT be accepted.**

Registrations subjected to the payment of a registration fee will not be validated until the payment is completed through the online payment platform.

**Onsite payments will NOT be accepted.**

Individuals, Clubs and National Federations are responsible for the quality of the entered registration data.

The online registration record will be openly disclosed to everyone from the beginning, allowing consultation by WKF NFs of all registered participants in real time.

**Any issue regarding online registration must be notified to the software provider and to the WKF, five days before the first day of competition at the latest, so that they can be properly taken in consideration without it altering the smooth running of the process.**

### Technical Support for Online Registration

In case of any questions concerning online registration, please directly contact the Sportdata software team via the following email address; [karate1@sportdata.org](mailto:karate1@sportdata.org)

## 9.1 Athlete Registration

Athlete registration is divided in two phases (all phases will open and close at the 12:00 h GMT +0 of the listed day):

- **Phase 1, from 03/01 to 17/01, 2025**: Registration only by National Federations. Maximum, 1 athlete per category.
- **Phase 2, from 18/01 to 19/03, 2025**: Open registration.

All **competitor** registrations must be made **ONLINE**:

ATHLETES  
REGISTRATION

### 9.1.1 Entry Fee

The entry fees (per individual category entry) are as follows:

- 75€ during the 1<sup>st</sup> month (from 03/01 to 03/02 at 23:59 hrs GMT +0)
- 90€ during the following month (from 04/02 at 00:00 hs to 03/03 at 23:59 hrs GMT +0)
- 100€ during the last 15 days (from 04/03 at 00:00 hs to 19/03 at 12:00 hrs GMT +0).

### 9.1.2 Payment

All payments must be processed through the ONLINE PAYMENT PLATFORM. Onsite cash payments will NOT be accepted.

## 9.2 Referees Registration

REFEREE  
REGISTRATION

After accessing the registration page, you will need to choose your registration group:

- **Referees with WKF and/or Continental License:** the WKF reserves the right to stop registration once the number of registered referees with WKF and/or Continental License has reached the number of 120.
- **Referee Commission members**
- **Referees ranked within the top 30 of the WKF Referee Ranking** on the opening date of registration for each event.
- **NF Referees without WKF and/or Continental License**

The Referee Ranking applicable for the GUADALAJARA 2025 YL will be the one of the opening day of the online registration, 03/01/2025.

REFEREE RANKING  
TOP 30

All **referee** registrations must be made **ONLINE**

Referee registration will open on January 3<sup>rd</sup> at 12:00 h GMT+0 and close on March 19<sup>th</sup> at 12:00 h GMT +0.

## 9.3 Coaches Registration

The minimum level required to perform as a coach in Youth League events is the **WKF Accredited Coach Certification (Coach level 1)**.

All **coach** registrations must be made **ONLINE**

COACH  
REGISTRATION

Coaches registration will open on January 3<sup>rd</sup> at 12:00 h GMT+0 and close on March 19<sup>th</sup> at 12:00 h GMT +0.

## 9.4 Official Onsite Accreditation

Onsite official accreditation will take place on:

- Wednesday, 02/04/2025 from 10.00 a.m. to 18.00 p.m. at the (TBD). **For all categories.**
- Thursday, 03/04/2025 from 10.00 a.m. to 14.00 p.m. at the (TBD). **For U14, Cadet and Junior categories only.**
- Friday, 04/04/2025 from 10.00 a.m. to 14.00 p.m. at the (TBD). **For U14 and Cadet categories only.**

Weigh-in must be done on:

- Wednesday, 02/04/2025, from 14.00 a.m. to 18.00 p.m. at the (TBD). **For U21 category only.**
- Thursday, 03/04/2025, from 10.00 a.m. to 14.00 p.m. at the (TBD). **For Junior category only.**
- Friday, 04/04/2025, from 10.00 a.m. to 14.00 p.m. at the (TBD). **For Cadet category only.**
- Saturday, 06/04/2025, from 10.00 a.m. to 14.00 p.m. at the (TBD). **For U14 category only.**

If changes are required during the official accreditation session because of incorrect registration data, a fee of € 50 is charged for each change.

Accreditation cards will be issued at registration, displaying the participants main data, a photograph and information about registered categories. The accreditation card must be carried at all times during the event.

The athlete's accreditation must contain an updated photograph that allows the athlete to be identifiable throughout the event.

Only members of national federations recognized by WKF are admitted to participating, as per the [Karate 1 - Youth League Organising Rules](#).

**All participants must submit an official passport for the WKF identification and validation at the accreditation session.**

**Every competitor's accreditation must be done in person by the athlete's delegate by bringing the athlete's passport to the accreditation session.**

**Any competitor who may not have collected their accreditation during official registration, either personally or through their delegate, WILL NOT BE INCLUDED IN THE DRAW.**

**The weigh-in will be carried out immediately after receiving the accreditation. Those athletes who fail to attend the weigh-in WILL NOT BE INCLUDED IN THE DRAW.**



## 10. MANDATORY DOCUMENTS

### MANDATORY DOCUMENTS TO BE SUBMITTED AT OFFICIAL ACCREDITATION

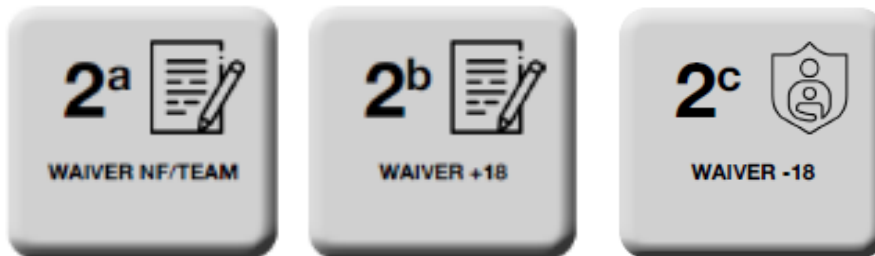
All participants (Coach, Athletes, Referees, Officials) must submit a printed and signed Waiver of Liability form at the onsite accreditation.

There are 3 kinds of forms; one is for the Club/Team Delegate, while the other 2 are for all other participants (Over 18 years old and under 18 years old). Please find the links to each of them below.

#### **Waiver of Liability Forms:**

- i. NF/Team Representative Waiver ([link](#))
- ii. Individual +18 Form ([link](#))
- iii. Individual - 18 Form (Parental Consent) ([link](#))

**• The NF/Team Delegate takes full responsibility for the validity of all signatures and information provided.**



## 11. ANTI DOPING EDUCATION

As a participant in karate, it is your responsibility to follow the WKF Anti-Doping Rules. Click [here](#) to take an Anti-Doping Education & Learning Course and learn more about your responsibilities and visit our [website](#). In exchange for a few hours, you help keep karate a clean sport.



#### **Course Recommendations**

International-level Athletes Education  
High Performance Coach Education  
Medical Professionals Education  
Parents of Elite Athletes Education

## 12. WKF COACH COURSE PROGRAMME

According to the WKF Coach Educational Programme, **the minimum certification required to take part in Karate 1 – Youth League events is the “Accredited Coach” (level 1)**. To obtain such certification, coaches must attend the corresponding **briefing**.

The Accredited Coach licence can be obtained:

- through the [WKF E-learning platform for Coaches](#).
- or by attending one of the Programmes for Coaches that the WKF will hold in official events.

A WKF Programme for Coaches (Level 1) will be held in all Karate 1 - Youth League events 2024.

### 12.1 WKF Coach Programme / Accredited Coach Certification Guadalajara 2025

Please find below the Coach schedule and the details for the registration process:

#### 12.1.1 Schedule

Accredited Coach Briefing				
Wednesday	02/04/2025	from 17:00 hrs	to 18:30 hrs	TBD

#### 12.1.2 Online Registration

Coaches wishing to attend the Briefing for obtaining the “WKF Accredited Coach Briefing” in Guadalajara must be registered online with a deadline set on 19/03/2025 (15 days prior to the event) through the link below:



Accredited Coach Programme registration will open on January 3<sup>rd</sup> at 12:00 h GMT+0 and close on March 19<sup>th</sup> at 12:00 h GMT +0.

Should you have any difficulties when registering, please contact [karate1@sportdata.org](mailto:karate1@sportdata.org) for technical support.

### 12.1.3 Fees

Please be reminded that the fees for the Program for WKF Coaches are as follows:

Briefing for “Accredited Coach” level (new application or license renewal) **300 EUR**

### 12.1.4 Payment

All payments must be made through Sportdata platform.

No other methods of payment will be accepted.

Registrations and payments onsite will not be accepted.

## 13. MEDIA

### 13.1 Press

Press accreditation can only be given to professional journalists working for a media and having proof of their credentials.

Media professionals can register to request press accreditations through the online registration form which can be found here:

**PRESS  
REGISTRATION**

**Video recording will not be allowed**

Should you need more information about press or media related issues, please directly contact the World Karate Federation’s office: [press@wkf.net](mailto:press@wkf.net)

## 14. COMPETITION VENUE

Palacio Multiusos de Guadalajara, Address: Av. de El Vado, 13, 19005 Guadalajara

[TROCELLEN]

[OFFICIAL TATAMI FOR THIS TOURNAMENT](#)



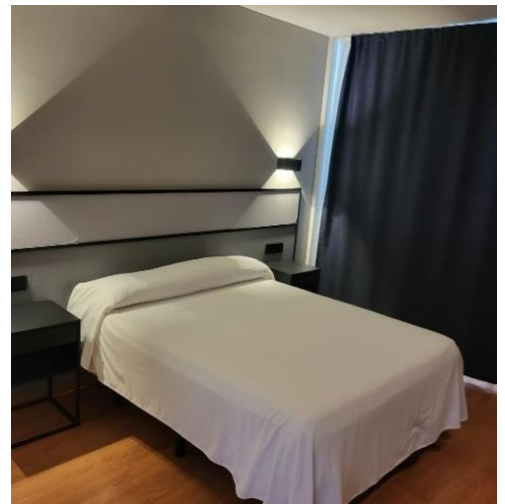
## 15. TICKET FOR SPECTATORS

The ticket categories and prices are free.

## 16. HQ HOTEL

### HOTEL TORCAL \*\*\*

Francisco Medina y Mendoza 4, parc 6. 19171 Cabanillas del Campo – Guadalajara.

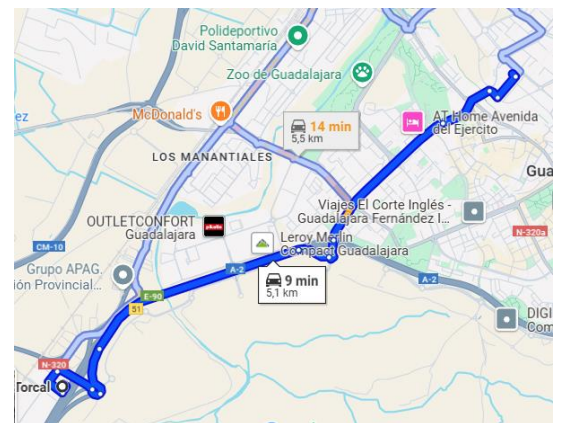


#### LOCATION:

Located 9.5 km kilometers (9 minutes by car) from the Guadalajara Multipurpose Palace.

With direct access to the hotel from the N-II, at km 51 direction Madrid.

Hotel of reference, specialized in accommodation for **competition referees**, sportsmen and women, spacious rooms, cafeteria/restaurant, meeting rooms, free wifi, private parking, free and closed at night.



### HOTEL TORCAL \*\*\*

Rates per person per night. VAT included

Single room		Doble room		Triple room	
AD	MP	AD	MP	AD	MP
93€	111€	65€	83€	64€	82€

## 17. Official hotels

### HOTEL AC MARRIOTT GUADALAJARA\*\*\*\*

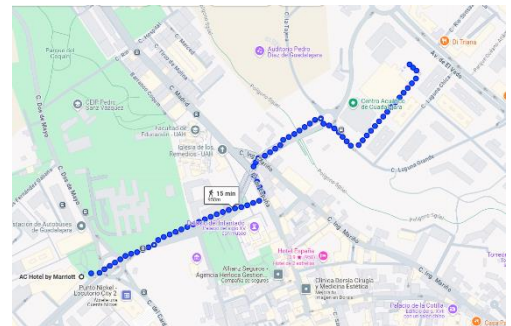
Avenida del Ejército, 6. 19004 Guadalajara.



#### LOCATION:

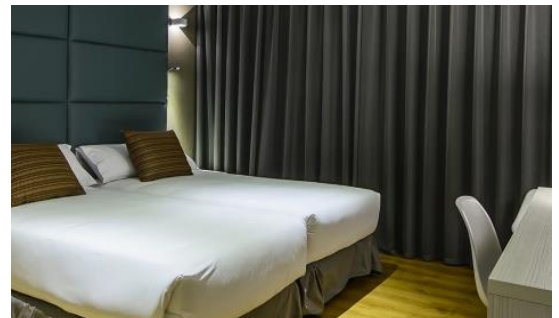
Located 1.6 kilometers (4 minutes by car) from the Multipurpose Palace, and 15 minutes on foot, next to the Bus Station and very close to the downtown and monumental area of the city.

It has a 24-hour gym, free Wi-Fi, and paid subway parking.



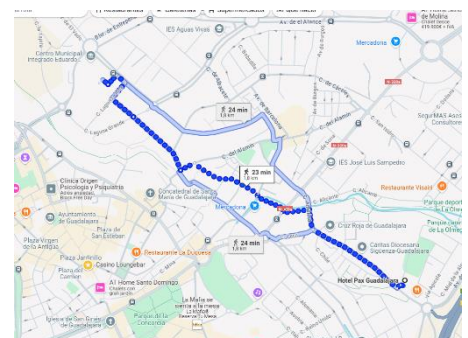
### HOTEL PAX\*\*\*\*

Avenida de Venezuela, 15. 19005 Guadalajara.



#### LOCATION:

Located in the city center, 3.4 kilometers, 6 minutes by car, and 1.8 km walking, (20 minute walk) from the Multipurpose Palace, next to large green areas and sports areas of the city, has direct access from the A2, bar service and free Wi-Fi.



## HOTEL IRIS \*\*\*

C/Trafalgar, 14 Pol. Industrial El Balconcillo, 19004 Guadalajara



### LOCATION:

Located 3.4 kilometers (7 minutes by car) from the Palacio Multiusos. Located in Pol Ind el Balconcillo, with direct access from the A2. Among its facilities it has a Restaurant, Bar-Cafeteria, Business Corner, Safe (at the Reception), free parking, high speed Wifi, as well as meeting rooms.



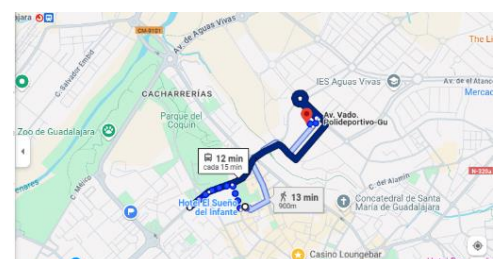
## HOTEL SUEÑO DEL INFANTE\*\*

C/San Juan de Dios 14 , 19001 Guadalajara



### LOCATION:

Located 2 kilometers (15 minutes walk) from the Palacio Multiusos. Recently renovated hotel, in the historic center of the city. Free Wi-Fi in common areas. Bar - cafeteria inside the hotel.



## HOTEL ESPAÑA\*\*

Calle Teniente Figueroa 3 , 19001 Guadalajara

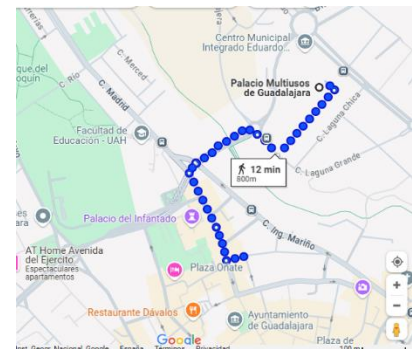


### LOCATION:

Modern hotel, with history, in the center of Guadalajara.

Just 12 min. walk from the Multipurpose Palace of Guadalajara.

It has a bar, with an interior terrace.



## PARADOR DE ALCALÁ DE HENARES\*\*\*\*

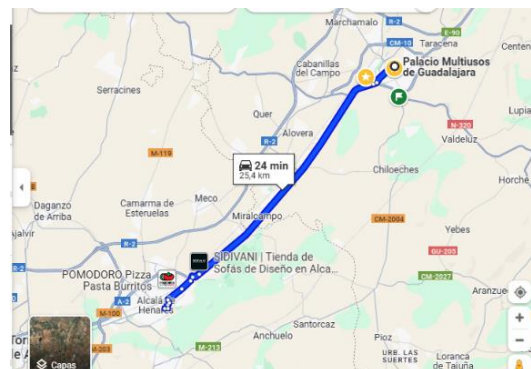
Colegios, 8 28801 Alcalá de Henares (Madrid)



### LOCATION:

Located 25km (24 min. by car) from Guadalajara's Palacio Multiusos.

In the Parador de Alcalá de Henares, history and avant-garde come together in a unique combination. The building, which recovers three convent-colleges of the seventeenth century. Comfortable rooms with full bathroom, free wiffi, gym, gastronomic space...





## HOTEL ALCALA PLAZA\*\*\*

Calle Hita 4, 28805 Alcala de Henares (Madrid)



### LOCATION:

18km from Guadalajara Multipurpose Palace ( 18 min by car).

Hotel Alcalá Plaza has spacious and comfortable rooms and meeting rooms that will provide you with the best service during your stay. In addition, you will be able to enjoy a wide selection of quality services that will make your stay a memorable one. It is located very close to an important commercial area in Alcalá de Henares.



## HOTEL EL BEDEL\*\*\*

Calle Hita 4, 28805 Alcala de Henares (Madrid)

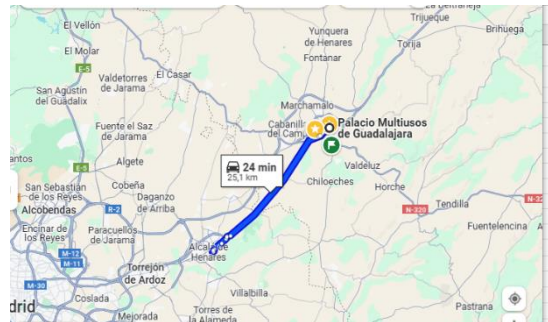


**LOCATION:**

Hotel El Bedel is located in the center of Alcalá de Henares, 24 MIN BY CAR FROM THE Multipurpose Palace of Gualadalajara.

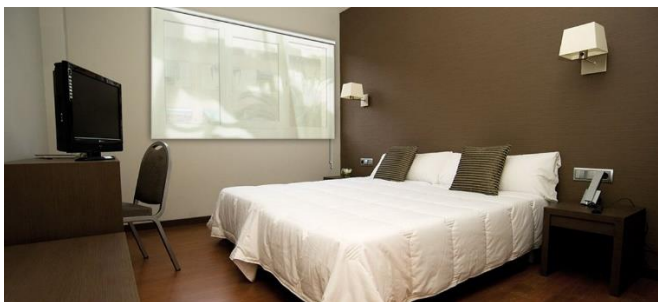
Rooms are fully equipped, each room has a private bathroom with bathtub and everything necessary for your comfort (telephone, safe, minibar, television, free wifi, etc.).

Among other services to our customers, we offer 24-hour reception service, our own restaurant, room service, luggage storage.



**HOTEL CISNEROS\*\*\***

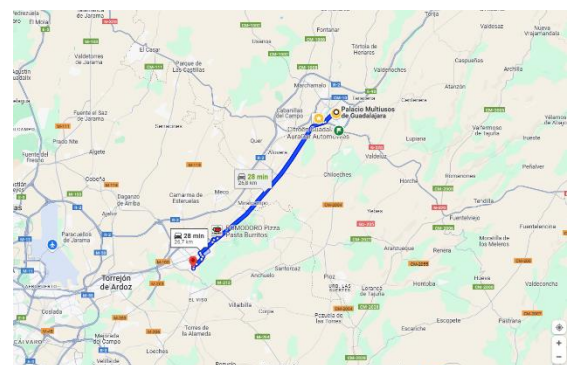
Pº Pastrana, 32. Alcalá de Henares. 28803, Madrid



**LOCATION:**

Located 26.7km from the Palacio multiusos de Guadalajara, 28 min by car. In the city of Alcalá de Henares.

Close to the historical center of the city, restaurant, private garage and outdoor parking, free wifi.



## HOTEL IBIS BUDGET MADRID ALCALA DE HENARES LA DEHESA\*\*

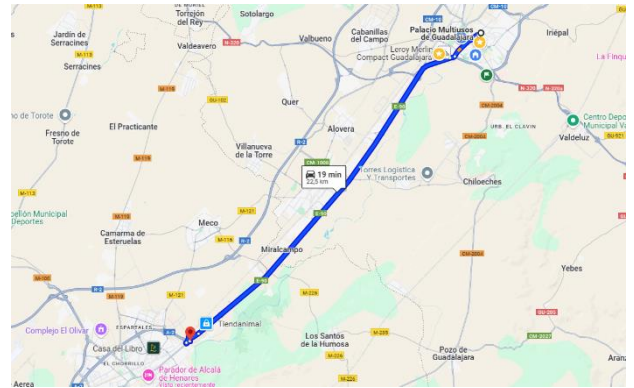
Calle Hita 2, 28805 Alcala de Henares ( Madrid)



### LOCATION:

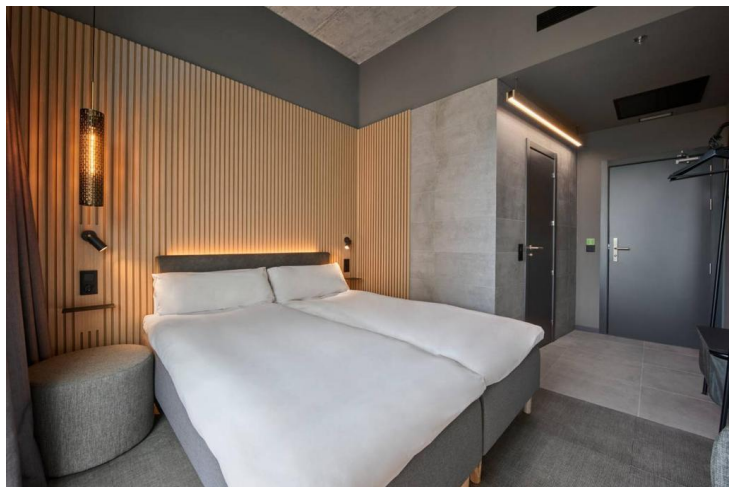
Just 19 min drive from the Palacio Multiusos de Guadalajara.

Next to La Dehesa shopping center and leisure areas. It has a bar open 24 hours, rooms with TV, wifi and air conditioning.



## HOTEL ZLEEP MADRID AIRPORT \*\*\*

402 Avenida de Aragón, San Blas, 28022 Madrid, España



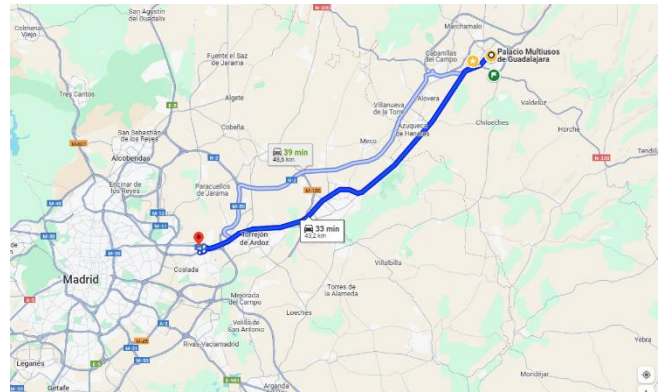
**LOCATION:**

33 min drive from Guadalajara Multipurpose Palace (43 km).

It has 24h reception, pets allowed, rooms with private bathroom. It has concierge service, smoke-free rooms, fitness center, free wifi and bar.

Private parking is available on site.

The property offers a complimentary shuttle service to and from the airport.



**17.1 Hotel Prices**

**GUADALAJARA HOTEL RATES**

<b>HQ HOTEL TORCAL ***</b> Rates per person per night. VAT included					
Single room		Doble room		Triple room	
AD	MP	AD	MP	AD	MP
93€	111€	65€	83€	64€	82€
<b>HOTEL AC MARRIOT GUADALAJARA ****</b> Rates per person per night. VAT included					
Single room			Double Room		
BB			BB		
202€			111€		
<b>HOTEL PAX ****</b> Rates per person per night. VAT included					
Single room			Double Room		
BB			BB		
89€			70€		

HOTEL IRIS *** Rates per person per night. VAT included		
Single room	Double Room	Triple Room
BB	BB	BB
84€	60€	58€
HOTEL SUEÑO DEL INFANTE** Rates per person per night. VAT included		
Single room	Double Room	Triple Room
BB	BB	BB
88€	57€	55€
HOTEL ESPAÑA** Rates per person per night. VAT included		
Single room	Double Room	Triple Room
BB	BB	BB
75€	53€	49€

## HOTEL RATES AROUND GUADALAJARA

PARADOR DE ALCALA DE HENARES**** Rates per person per night. VAT included	
Single room	Double Room
HP	HP
191€	135€

NOTE: Minimum half-pension plan

HOTEL ALCALA PLAZA*** Rates per person per night. VAT included	
Single room	Double Room
BB	BB
93€	63€

HOTEL EL BEDEL*** Rates per person per night. VAT included		
Single room	Double Room	Triple Room
BB	BB	BB
110€	85€	80€

HOTEL CISNEROS*** Rates per person per night. VAT included	
Single room	Double Room
BB	BB
91€	57€

HOTEL IBIS BUDGET ALCALA DE H. LA DEHESA** Rates per person per night. VAT included		
Single room	Double room	Triple room*
BB	BB	BB
95€	57€	53€

NOTE\* triple rooms with double bed and extra bunk bed

HOTEL ZLEEP MADRID AIRPORT *** Rates per person per night. VAT included	
Single room	Double room
BB	BB
95€	60€

Rates per person per night, according to room type, VAT included.

Bed and breakfast, ask for supplement for half board or full board.

Availability and rates on request.

Confirmation of the reservation with the first payment, for an amount of 50% of the total reservation.

Minimum stay 4 nights, for shorter stays please consult us.

## TERMS OF PAYMENT AND CANCELLATION:

First payment of 50% of the total amount of the reservation, for confirmation.

Second payment of 50% of the total amount before March 1, 2025.

The reservation will be cancelled if payments are not made on time.

First payment is non-refundable in case of cancellation.

Cancellations:

Up to and including February 28, 2025, carry 50% fee.

From March 1st inclusive, 100% cancellation fee.

If you have any questions, please contact us at: [eventos@volapuk.es](mailto:eventos@volapuk.es)

### 17.2 Transport Services

#### TRANSFER SERVICE

##### From Madrid Adolfo Suarez Airport to Hotel / or Palacio Multiusos of Guadalajara

Private transfer up to 3 pax.....220€ / service

Private Transfer up to 7 pax .....350€ / service

Shared transfer from 11 to 19 pax..... 45€ / pax / service

Shared transfer from 20 to 28 pax..... 35€/ pax/ service

Shared transfer from 29 to 59 pax..... 25€/ pax/ service

##### From RENFE Atocha and/or Chamartin to Hotel / or Palacio Multiusos de Guadalajara

Private transfer up to 3 pax.....250€/pax/ service

Private transfer up to 7 pax .....390€ / service

Shared transfer from 11 to 19 pax.....48€ / pax / service

Shared transfer from 20 to 28 pax..... 38€/ pax/ service

Shared transfer from 29 to 59 pax..... 28€/ pax / service

Other options, both in number of people, as well as in origin and destination of transfers consult [eventos@volapuk.es](mailto:eventos@volapuk.es) , as well as if you want to hire internal transfers from hotel to Palacio Multiusos de Guadalajara.

Payment and cancellation policies are the same as for hotels.

If you wish to rent a car, we provide you with an address where you can make the reservation directly, with special rates for the event.

### 17.3 Meals at the Venue

There is no food service inside the pavilion. However, there are numerous restaurants, bars and cafes in the immediate area.

## 18. VISA REQUIREMENTS

<https://www.interior.gob.es/opencms/en/servicios-al-ciudadano/tramites-ygestiones/extranjeria/control-de-fronteras/entrada-en-espana/>

**List of nationals of third countries required to be in possession of a valid visa:**

<https://eur-lex.europa.eu/legal-content/EN/TXT/HTML/?uri=CELEX:02018R1806-20210101&from=ES>

Please submit your request before 1st March in order to provide you with the paperwork with sufficient time. Should your request arrive after this deadline, the Spanish Karate Federation does not guarantee visa obtaining for team members and team officials.

E-mail: [events.assistant@rfek.es](mailto:events.assistant@rfek.es)

## 19. CITY / COUNTRY INFORMATION

### 19.1 About GUADALAJARA

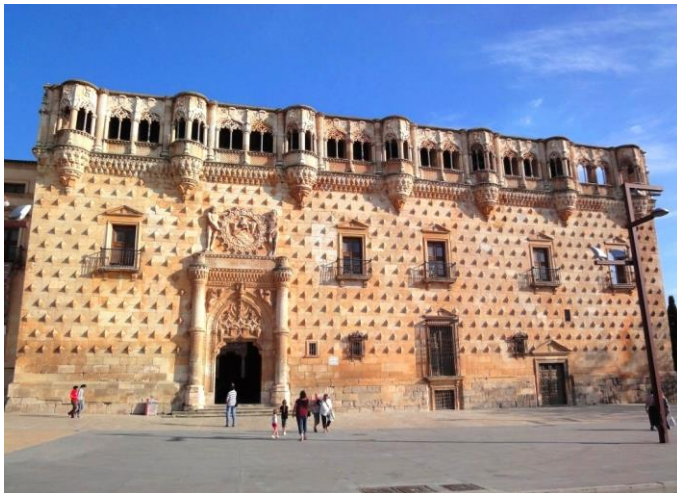
Guadalajara is a Spanish city and municipality, capital of the province of the same name, in the autonomous community of Castilla-La Mancha. It is located on a hillock between two deep ravines, the Alamín and the Coquín or San Antonio, which brought their waters to the left bank of the Henares river valley, in the highest part of the southern plateau, between the regions of La Alcarria and La Campiña del Henares.

It was founded by the Arabs between the 8th and 9th centuries. Its name, from the Andalusian Arabic 'wād al-ḥaḡarah' (وادي الحجرة or واد الحجرة) given to the river Henares, is thought to have come from this period. Nearby there had been a Roman site, whose



name, Arriaca, may have the same meaning. The city reached a certain splendour in the 10th century, despite its location in a territory that was almost always on a war footing

In 1085, Guadalajara was conquered by Alfonso VI of León, attributed to Alvar Fáñez de Minaya.<sup>5</sup> From that moment until the battle of Navas de Tolosa in 1212, the history of the city reflects the course of the wars against the Almoravids and Almohads.<sup>6</sup> In 1133, King Alfonso VII granted the first charter to the town to regulate the life of its community, establishing a set of rules, rights and privileges, and in 1219, Fernando III extended it by granting the long charter to the town.<sup>7</sup> Subsequently, the protection of King Alfonso X ensured the economic development of the town, by defending its merchants and authorising its fairs and markets. In the second half of the 14th century, the Mendoza family settled in Guadalajara, and their subsequent rise brought with it that of the city. In 1460, King Enrique IV granted the town the title of city. The 16th century saw a period of prosperity.



## 19.2 How to get to GUADALAJARA

### Flight

The closest international airport from Guadalajara is Madrid Adolfo Suarez Madrid-Barajas.

- Madrid Airport is about 50Km away from GUADALAJARA.
- Madrid Airport is about 25Km away from ALCALÁ DE HENARES (town located 30 km from Guadalajara).

### Train and bus

There is a frequency of train schedules between the following stations:

- Airport Terminal 4 Train Station (Madrid) – Guadalajara Train Station (Duration: 1h and 50 minutes aprox.)
- Alcala de Henares Train Station (Madrid) – Guadalajara Train Station (Duration: 25 minutes aprox.)

<https://www.renfe.com/es/en/suburban/suburban-madrid>

On the other hand, there are buses from Madrid to Guadalajara:

- Madrid Avenida America Bus Station – Guadalajara Bus Station (Duration: 1 h aprox.)

<https://www.alsa.com/en/web/bus/home>

## 19.3 Practical Information

### Opening Hours (Shops / Pharmacies)

Opening Hours in Guadalajara are the following:

Opening times: Most of the shops and shopping centres are open from 10.00 to 20.30 or 21.30 in the evening. Traditional shops open from 10.00 to 14.00 hours and from 16.30 to 20.30 hours.

How to pay: Most people pay in cash or with a credit card, when you must show your passport or identity card.

### **Currency**

Spanish currency is the Euro (€). Currency Converter Link:  
<http://www.xe.com/en/currencyconverter/>

### **Electricity**

In Spain the power sockets are of types C and F. The standard voltage is 230 V and the frequency is 50 Hz

### **Language**

Official language in Spain is Spanish. All representatives of OC speak English. Local population also speak basic English

### **Time**

CET / GMT+1

### **Weather**

March-April usually do some pleasant and warm days, but nothing is guaranteed. Mainly sunny and dry days. The average maximum temperature in Guadalajara in March is 14°C and the average minimum temperature is 3°C.

### **Safety in the city**

Emergency services: 112 (medical, police, fire)

## **20. OMISSIONS**

As regards that the specific items are not expressly foreseen in the present bulletin, reference is to be made to the general rules and guidelines contained in WKF Regulations.

# 2025

## FUJAIRAH

## GUADALAJARA

## POREC

## MONTERREY

## VENICE

