



KUALA LUMPUR 2025



3rd – 5th

OCTOBER

Karate 1 – Series A

KUALA LUMPUR 2025

CONTENTS

1. WELCOME MESSAGE	3
1.1 Greeting from the Head of the host NF	3
2. INTRODUCTION	4
3. INTRODUCTION KARATE 1-SERIES A KUALA LUMPUR, 2025	4
4. COMPETITION INFORMATION	5
4.1 Categories	5
4.2 Prizes	5
5. CONTACT INFORMATION.....	5
5.1 Organizers contact details	5
5.2 Local Organising Committee contact details.....	5
5.3 WKF Event Supervisor contact.....	6
5.4 Safe Sport contact.....	6
6. WKF APPROVED PROTECTIONS, KARATEGIS & TATAMIS	7
7. EVENTS SCHEDULE.....	10
8. COMPETITION PROGRAMME	11
9. RANKING	12
10. ONLINE REGISTRATION & OFFICIAL ACCREDITATION	12
10.1 Athletes Registration	13
10.1.1 Entry Fee	13
10.1.2 Payment.....	13
10.2 Referees Registration	14
10.3 Coaches Registration.....	14
10.4 Official Onsite Accreditation	15
10.5 Technical Support for Online Registration	15
11. MANDATORY DOCUMENTS	16
12. ANTI DOPING EDUCATION	16
13. WKF ACCREDITED COACH	17
13.1 WKF Coach Programme / Accredited Coach Certification (level 1)	17
13.2 Schedule.....	17
13.3 Online Registration	17
13.4 Fees.....	17
13.5 Payment.....	17

14.	MEDIA	18
14.1	Press	18
15.	COMPETITION VENUE.....	19
16.	TICKET FOR SPECTATORS.....	20
17.	HQ HOTEL	21
18.	Official hotels.....	21
18.1	Hotel Prices	23
18.2	Transport Services	23
18.3	Meals at the Venue	23
19.	VISA REQUIREMENTS.....	24
20.	CITY / COUNTRY INFORMATION	24
20.1	About Malaysia	24
20.2	How to get to Malaysia	24
20.3	Practical Information	25
20.4	Side Events	25
21.	GENERAL INFORMATION	25
21.1	Currency and Exchange	25
21.2	Business Hours	25
21.3	Electricity	25
21.4	Local Law	25
21.5	Vehicle Driving.....	26
21.6	Alcohol.....	26
21.7	Tobacco	26
21.8	Safety in the city	26
22.	OMISSIONS	26

1. WELCOME MESSAGE

1.1 Greeting from the Head of the host NF

The development of the World Karate Federation in recent years has been tremendous, and as a result, National Federations have adapted and produced high-quality Championships.

The Malaysia Karate Federation is delighted to organize in NEGERI SEMBILAN the “WKF Karate 1 - Series A” from October 2025.

Following the successful accomplishment of the “WKF Karate 1 - Series A 2024,” the management and administration of the Malaysia Karate Federation feel more honored than ever to host a new edition of the “Series A” in NEGERI SEMBILAN. Our aim is to ensure the Championships are purposeful and worthwhile for all stakeholders — athletes, coaches, referees, delegates, and spectators.



The Championships will take place at the same prestigious venue, the NEGERI SEMBILAN Sports Complex, which will serve as the central hub for competition and excellence throughout the event.

On behalf of the Executive Committee of the Malaysia Karate Federation, and with gratitude to all contributors, participants, the World Karate Federation personnel, we express our sincere thanks for the cooperation and trust extended to us to host the exclusive WKF Karate 1 - Series A Kuala Lumpur 2025.

Your participation means a great deal to us, and we look forward to welcoming you to MALAYSIA!

DATUK WIRA NUR AZMI BIN AHMAD
PRESIDENT
MALAYSIA KARATE FEDERATION



2. INTRODUCTION

The WKF Karate 1-Series A is a world-class competition that provides karatekas around the world with more competitive opportunities to shine at the highest level. Presented in an open format thus allowing every athlete in the world to compete, the Karate 1- Series A is framed under the umbrella of the Karate 1 to bring together the best competitors in a series of open championships of unprecedented scale and quality. In addition to this, the Karate 1-Series A offers karatekas the chance to increase their ranking position as the universality of top Karate tournaments is showcased.

While maintaining the individual character of each event, all Series A events have to meet certain standards in order to achieve the above-mentioned goals. Therefore, it is necessary to follow these Karate 1 – Series A Organizing Rules 2025.

All members of WKF are admitted participating. The competition categories are identical to those of Senior World Championships except for Kumite team.

The number of competitors for **Kumite** modality is limited to a maximum of 96 athletes per category.

For **Kata** modality the number of competitors is limited to a maximum of 128 athletes.

The WKF [Competition Rules](#) in force will be applied.

Competitors of individual categories earn ranking points in every WKF Karate1 event according to the official [WKF World Ranking regulations](#).

3. INTRODUCTION KARATE 1-SERIES A KUALA LUMPUR, 2025

The Karate 1 – Series A Kuala Lumpur, 2025 will be held in N9 Arena, Nilai, Negeri Sembilan between October 3rd – 5th, 2025.

Nilai is a rapidly developing town located in the state of Negeri Sembilan, Malaysia. Strategically situated near the Kuala Lumpur International Airport (KLIA), Nilai serves as an important hub for education, commerce, and transportation. The town is known for its vibrant mix of modern infrastructure and cultural heritage, contributing to its role as a key growth center within the region.

4. COMPETITION INFORMATION

4.1 Categories

- Female Kumite: - 50kg, - 55kg, - 61kg, - 68kg, + 68kg
- Male Kumite: - 60kg, - 67kg, - 75kg, - 84kg, + 84kg
- Individual Kata: Female, Male
- Team Kata: Female, Male

4.2 Prizes

For Individual categories (Kumite and Kata):

- Gold medallist: 500 €
- Silver medallist: 300 €
- Bronze medallist: 100 €

For team categories (Kumite and Kata):

- Gold medallist: 600 €
- Silver medallist: 400 €
- Bronze medallist: 200 €

5. CONTACT INFORMATION

5.1 Organizers contact details

Malaysia Karate Federation

Address: No 70-1, Jalan Lingkaran MITC, Kompleks Perniagaan MITC Perdana, 75450 Ayer Keroh, Melaka

Tel: +6062315819

Email: secretary@makaf.net

5.2 Local Organising Committee contact details



Datuk Wira Nur Azmi Bin Ahmad
MAKAF President/
Organising Chairman



Mohd Razlan Shah Bin Mohamad Rabii
MAKAF Secretary
General



Sukumaran A/L Subramaniam
MAKAF Treasurer
General



Jayaseelan Vijayakumar
Organising Secretary

5.3 WKF Event Supervisor contact

The WKF Event Supervisor for this Series A event is Mr. Dominique Sigillo. His contact details are as follows:

Email: sigillo.wkf@gmail.com

In case of any questions related to the event please contact the WKF HQ events department:

Email: events@wkf.net

5.4 Safe Sport contact

WKF events must be safe for all athletes and participants and entirely free from any form of non-accidental violence, namely, harassment and abuse. Any such behaviour will not be tolerated.

If you or someone you know has been the victim of abuse or harassment in Karate, get help and report it.

Your first point of contact for any incident at this event is the WKF Event Supervisor, whose contact information you can find detailed above.

Otherwise, any other incident can be reported via the [WKF Official Complaint Form](#) and sent to: safekarate@wkf.net

6. WKF APPROVED PROTECTIONS, KARATEGIS & TATAMIS

The Karate 1-Series A complies with the highest level of presentation. In order to guarantee the correct delivery of the event, and to ensure the suitable quality of the tournament, exclusively the following brands are WKF Approved for use in the 2025 Karate 1 – Series A Season.

“WKF Approved” SPORT PROTECTIONS



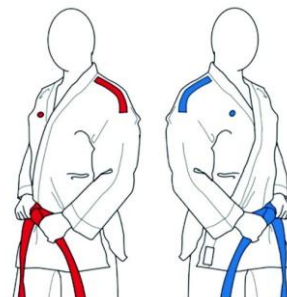
*Click on the logos

CHECK THE COMPULSORY PROTECTIONS FOR THIS COMPETITION

OFFICIAL KARATEGI KARATE 1 – SERIES A

Kumite and Kata karategis with the brand name embroidered on the shoulders in **RED or BLUE** are of mandatory use in Karate 1- Series A tournaments.

The authorized companies to use these karategis models are:



ADIDAS

ARAWAZA

BESTSPORT

BUDO-NORD

DAEDO

HAYASHI

PUNOK

MOOTO

SMAI

TOKAIDO

WACOKU

WESING

FUJIMAE

KO

KUROBUSHI

SHUREIDO

TUSAH

**Click on the buttons

WKF APPROVED HIJAB

In addition, the following additions to attire are allowed: Voluntary religiously mandated headwear approved by the WKF.

The brands with WKF Approved Hijab are the following:

- Arawaza
- Budo-Nord
- Daedo
- Punok
- SMAI
- Tokaido



“WKF Approved” DISTRIBUTORS ASSISTANCE

Click on the image to visit the distributors by countries.



“WKF Approved” TATAMIS

ishii

PROGNOME
TATAMI BY TROCELLEN

TaiShan

TATAMIX
STORE

WESING 九日山

*Click on the logos

7. EVENTS SCHEDULE

THURSDAY 02/10/2025	SERIES A	VENUE
REGISTRATION		
10:00 – 17:00 h	<p>Timeslots by alphabetic order of Countries will be applied to ensure a smooth onsite registration process. Such timeslot will be established once finished the online registration.</p> <p>STATIONS</p> <ol style="list-style-type: none"> 1) Waiver, Passport & Accreditation Check 2) System Check (Sportdata) 3) Athlete Weigh-in 	Putrajaya Marriott
18:30 – 19:30 h	Coach Meeting	Putrajaya Marriott
19:30 – 21:00 h	Draw and definitive schedule, published online	Putrajaya Marriott
19:30 – 21:00 h	Referee Briefing	Putrajaya Marriott
WKF COACH COURSE – ACCREDITED COACH CERTIFICATION (LEVEL 1)		
17:00 – 18:30 h	<p>Onsite Registration Entry: Coach</p> <p>STATIONS</p> <ol style="list-style-type: none"> 1) Waiver, Passport & Accreditation Check 	Putrajaya Marriott

COMPETITION VENUE: N9 Arena, Nilai, Negeri Sembilan, Malaysia

8. COMPETITION PROGRAMME

N9 ARENA, NILAI, NEGERI SEMBILAN	
Day/hour	COMPETITION
Friday, 03/10/2025 9:00-22:00	<p><u>Eliminations & Semi-Finals & Repechages</u> Female & Male Kata Female Kumite (+68Kg) Male Kumite (+84Kg)</p> <p><u>Bronze Medals & Finals</u> Female & Male Kata Female Kumite (+68Kg) Male Kumite (+84Kg)</p>
Saturday, 04/10/2025 09:00-20:30	<p><u>Eliminations & Semi-finals & Repechages</u> Female & Male Team Kata Female Kumite (-50kg, -55kg) Male Kumite (-60kg, -67kg)</p> <p><u>Bronze Medals & Finals</u> Female & Male Team Kata Female Kumite (-50kg, -55kg) Male Kumite (-60kg, -67kg)</p>
Sunday, 05/10/2025 09:00-19:00	<p><u>Eliminations & Semi-finals & Repechages</u> Female Kumite (-61kg, -68kg) Male Kumite (-75kg, -84kg)</p> <p><u>Bronze Medals & Finals</u> Female Kumite (-61kg, -68kg) Male Kumite (-75kg, -84kg)</p>

*The detailed competition schedule will be finalized after online registration has been completed and after registration has been completed in order to adapt it to the final number of athletes.

9. RANKING

Competitors can earn ranking points in every Karate 1 event according to the official WKF Ranking as can be seen in Section 2 (Points per Place) and Section 4 (Points Calculating System) of the WKF Ranking Rules.

As per the [WKF Ranking Rules](#), section 1 in WKF Events: the top 32 athletes in the world ranking will be allowed to participate in the last Karate 1 - Series A just before the IWScH and TWScH every year during the qualification period without earning any extra points in the WKF World Ranking.

Therefore, the top 32 athletes will be allowed to compete at Karate 1 - Series A Kuala Lumpur event 2025. For further information regarding registration criteria, please be referred to section 10.1 Athlete registration on this bulletin.

The [Event Ranking](#) is defined as a static file which reflects on the ranking on the opening day of the online registration for a given event.

10. ONLINE REGISTRATION & OFFICIAL ACCREDITATION

Registration starts three (3) months prior to the event, **on 3rd July 2025**, and close fifteen (15) days before the tournament **on 18th September 2025 at 12:00 hrs GMT +0**

All registration in a Series A event must be processed ONLINE.

No registration will be accepted after the official online registration deadline and all requests will be declined.

Onsite registrations will NOT be accepted.

Registrations subjected to the payment of a registration fee will not be validated until the payment is completed through the online payment platform.

Onsite payments will NOT be accepted.

Individuals and National Federations are responsible for the quality of the entered registration data.

The online registration will be openly disclosed for everyone from the beginning, allowing consultation by WKF NFs of the events' participants registered in real time.

Any issue regarding the online registration has to be notified to the software provider and to the WKF, latest five days before the first day of competition, in order to allow taking them in consideration without altering the smooth running of the process.

Technical Support for Online Registration

In case of any questions concerning the online registration please directly contact the Sportdata software team via the email address; karate1@sportdata.org

10.1 Athletes Registration

Athletes' registration is divided in the following phases (all phases will close at the 12:00 hrs GMT +0 of the listed day)

- **Phase 1, from 3rd to 17th July 2025 (first two weeks):** Registration **only by National Federations** for athletes ranked between position **33 and 100 (included)** of the [Event Ranking](#). Maximum, 1 athlete per category.
- **Phase 2, from 18th July to 18th September 2025:** Open registration (including athletes ranked between 1 and 32 (included) of the [Event Ranking](#).)

All **competitor** registrations must be processed **ONLINE**:

**ATHLETES
REGISTRATION**

10.1.1 Entry Fee

The entry fees are as follows:

- Per individual category entry:
 - 100 €/ (until 2nd September 2025 at 23:59 hrs GMT +0)
 - 150 €/ last 15 days (from 3rd September 2025 at 00:00 hrs to 18th September 2025 at 12:00 h GMT +0)
- Per team category:
 - 100 €

10.1.2 Payment

All payments must be processed through the ONLINE PAYMENT PLATFORM. Onsite payments will NOT be accepted.

10.2 Referees Registration

REFEREE REGISTRATION

After accessing the registration page, you will need to choose your registration group:

- **Referees with WKF and/or Continental License:** the WKF reserves its right to stop the registration once the number of registered referees with WKF and/or Continental License has reached the number of 90.
- **Referee Commission members**
- **Referees ranked within the top 30 of the [WKF Referee Ranking](#) on the opening date of registration for each event.**
- **NF Referees without WKF and/or Continental License**

The Referee Ranking applicable for the Kuala Lumpur 2025 Series A will be the one on the opening day of the online registration, 3rd July, 2025.

REFEREE RANKING TOP 25

Referee registration will open on 3rd July 2025 at 12:00 hrs GMT+0 and close 18th September 2025 at 12:00 hrs GMT +0.

10.3 Coaches Registration

The minimum level required to perform as a coach in Series A events is the WKF Accredited Coach Certification (Coach level 1).

All **coach** registrations must be made **ONLINE**:

COACH REGISTRATION

Coach registration will open on 3rd July 2025 at 12:00 hrs GMT+0 and close 18th September 2025 at 12:00 hrs GMT +0.

10.4 Official Onsite Accreditation

The onsite official registration session will take place on **2nd October 2025 from 10h to 17h GMT +8 at Putrajaya Marriott Hotel, Putrajaya, Malaysia**

If changes are required during the official accreditation session due to incorrect registration data, a fee of €50 will be charged for each change. Please note that **category changes and athlete replacements will not be processed during the onsite accreditation session.**

The athlete's accreditation must contain an updated photograph that allows the athlete to be identifiable throughout the event.

At registration, accreditation cards will be issued with the participants' main data, a photograph and information about registered categories. The accreditation card must be worn at all times during the event.

Only members of national federations recognized by WKF are admitted to participating, following the registration procedures described in Series A Organising Rules (SA OR Point 6 Registration).

All participants must submit an official passport for the WKF identification and validation at the accreditation session.

The accreditation of any competitor must be done by the athlete or the athlete's coach, in person bringing the athlete passport at the accreditation session.

Any competitor who may not have collected their accreditation during the official accreditation session, either personally or through their coach, WILL NOT BE INCLUDED IN THE DRAW.

10.5 Technical Support for Online Registration

Web: https://www.sportdata.org/wkf/set-online/index.php?active_menu=home

Email: karate1@sportdata.org

The weighing will be carried out immediately after receiving the accreditation, those athletes who will not attend the weighing will not be included in the draw.

11. MANDATORY DOCUMENTS

MANDATORY DOCUMENTS TO BE SUBMITTED AT THE OFFICIAL ACCREDITATION

At the onsite registration, all participants (Coach, Athletes, Referees, Officials) must submit a printed and signed Waiver of Liability form.

There are 2 types, one is for the Club/Team Representative, while the other one is for all other participants. Please find the links below.

The LOC will be responsible for the collection and safe custody of all submitted waivers.

Waiver of Liability Forms:

- i. NF/Team Representative Waiver ([link](#))
- ii. Individual +18 Form ([link](#))
- iii. Individual -18 Form ([link](#))

• The NF/Team Representative takes full responsibility for the validity of all signatures and information provided.

12. ANTI DOPING EDUCATION

As a participant in karate, it is your responsibility to follow the WKF Anti-Doping Rules. Click the [here](#) to take an Anti-Doping Education & Learning Course and learn more about your responsibilities and visit our [website](#). In exchange for a few hours, you help keep karate a clean sport.



Course Recommendations

International-level Athletes Education
High Performance Coach Education
Medical Professionals Education
Parents of Elite Athletes Education

13. WKF ACCREDITED COACH

According to the Coach License Manual, **the minimum level required to take part in the Karate 1 events is the “Accredited Coach” level.** To obtain such certification, **coaches must attend a compulsory Coach Briefing.**

13.1 WKF Coach Programme / Accredited Coach Certification (level 1)

Please find below the Coach schedule and the details for the registration process:

13.2 Schedule

Accredited Coach Briefing				
Thursday	02/10/2025	17:00 h	to 18:30 h	Putrajaya Marriot Hotel

13.3 Online Registration

Those coaches who wish to attend to the “WKF Accredited Coach Briefing” at Series A Kuala Lumpur 2025, Malaysia, must be registered online and must fill out the “Accreditation Agreement for Coaches” that can be downloaded from the online registration site.

Accredited Coach Programme registration will open on 3rd July 2025 at 12:00 h GMT+0 and close 18th September 2025 at 12:00 h GMT +0.

**ACCREDITED COACH
COURSE REGISTRATION**

Should you have any difficulties when registering, please contact karate1@sportdata.org for technical support.

13.4 Fees

Please be reminded that the fee to attend the “Coach Briefing” and to obtain a new license or to renew your expired license of WKF Accredited Coach is 300 EUR.

13.5 Payment

All payments must be made through Sportdata platform.

No other methods of payment will be accepted.

Registrations and payments onsite will not be accepted.

14. MEDIA

14.1 Press

Press accreditation can only be given to professional journalists working for a media and having proof of their credentials.

Media professionals can register to request press accreditations through the online registration form which can be found at the link below:

**PRESS
REGISTRATION**

Video recording will not be allowed

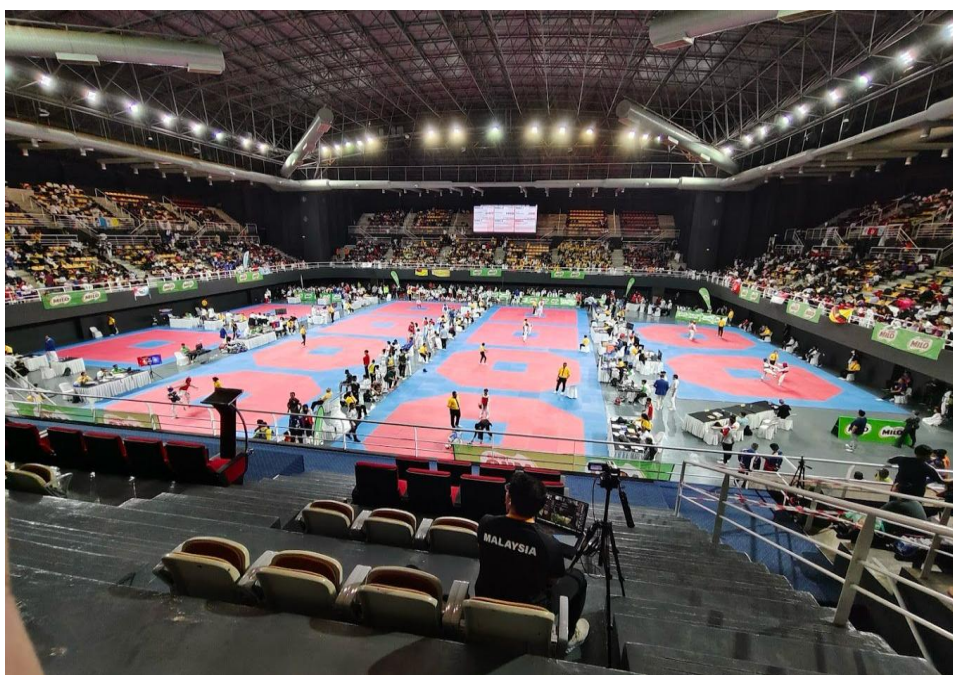
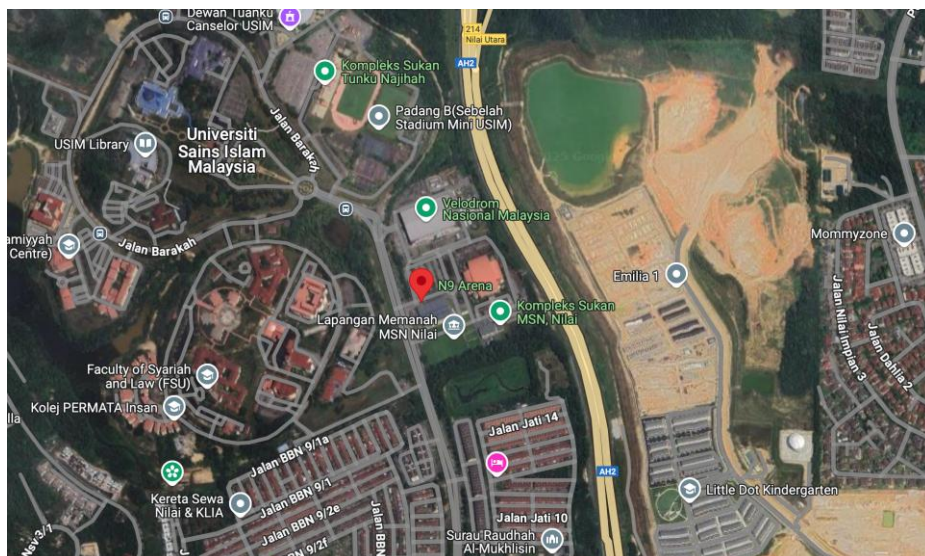
Should you need more information about press or media related issues, please directly contact the World Karate Federation's office: press@wkf.net

14.2 YouTube Streaming

The medal bouts (Sunday) of the event will be available by streaming on the WKF YouTube channel: <https://www.youtube.com/user/WKFKarateWorldChamps>

15. COMPETITION VENUE

N9 Arena, Nilai, NS



WKF Approved Karate Floor Mat



[OFFICIAL TATAMI FOR THIS TOURNAMENT](#)

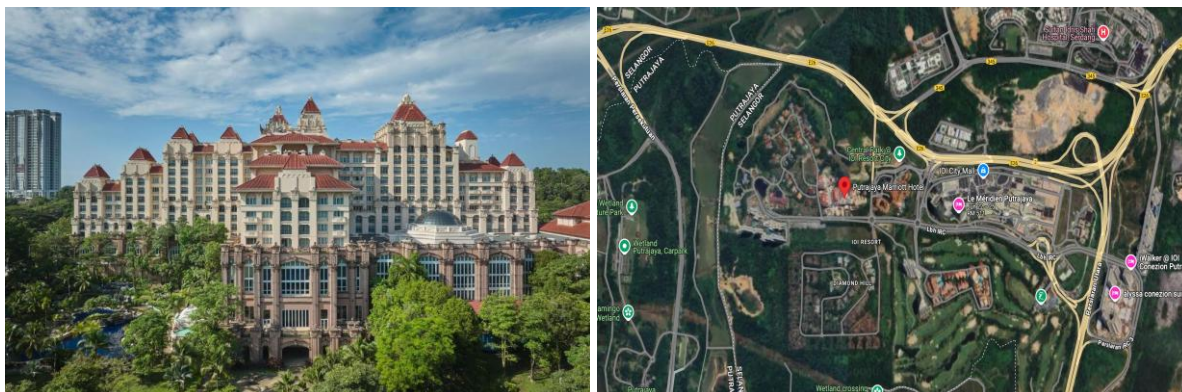
16. TICKET FOR SPECTATORS

The ticket categories and prices are:

Information regarding ticket prices will be provided soon.

17. HQ HOTEL

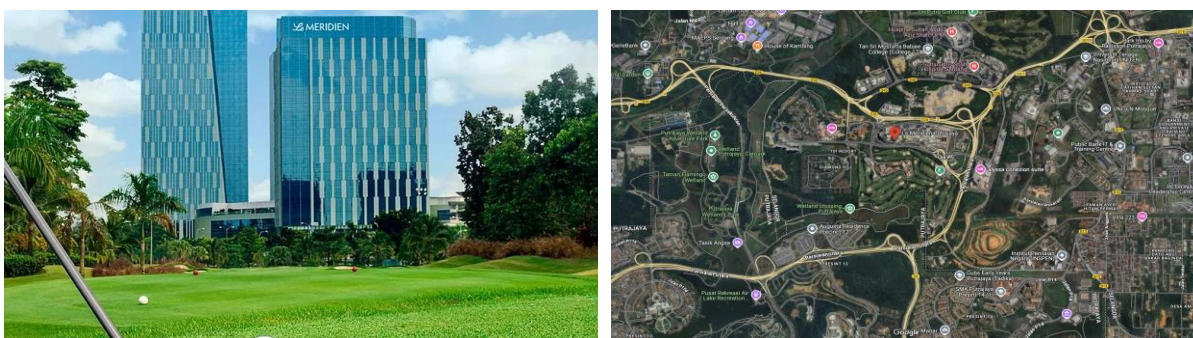
Putrajaya Marriott Hotel



The Putrajaya Marriott Hotel offers a luxurious 5-star experience, ideally situated within IOI City, Putrajaya. While the venue is approximately 32 km away, guests can anticipate a manageable 30-40 minute drive. The hotel also provides convenient access to Kuala Lumpur, being only 24 km or a 20-30 minute drive away, making it a strategic choice for both business and leisure travelers seeking high-end accommodation outside the immediate city center.

18. Official hotels

Le Meridien Putrajaya



Le Méridien Putrajaya, a 5-star hotel, is prominently located within IOI City Putrajaya. It is strategically positioned approximately 32 km from the venue, with an estimated travel time of 30-40 minutes by car. For guests looking to explore the capital, Kuala Lumpur is conveniently accessible, being around 24 km away with an approximate 20-30 minute drive. This prime location offers both tranquility and accessibility, making it an excellent choice for a variety of travelers.

Palm Garden Putrajaya



The Palm Garden Hotel, Putrajaya, a Tribute Portfolio Hotel, is a 4-star property conveniently situated within IOI City Putrajaya. While the provided distance to the venue is 32 km with an estimated 30-40 minute drive, the hotel is notably located very close to IOI City Mall, being within walking distance. For access to Kuala Lumpur, the hotel is approximately 24 km away, and guests can expect a 20-30 minute drive, making it a well-connected and comfortable choice for those seeking a balance of resort-style amenities and accessibility to key areas.

Moxy, Putrajaya



Moxy Putrajaya, a 4-star hotel located within IOI City Putrajaya, offers a vibrant and stylish stay. Guests can easily access the venue, which is approximately 32 km away with an estimated 30-40 minute drive. For trips to Kuala Lumpur, the city center is about 24 km distant, requiring a 20-30 minute drive. This hotel provides a modern and convenient option for travelers seeking quality accommodation within the IOI City complex, while also being well-connected to key destinations.

18.1 Hotel Prices

HOTEL	RATING	ROOM RATE	BOARD BASIS	DEADLINE RESERVATION
Putrajaya Marriott Hotel	5 Star	€ 150.00	BREAKFAST	17/09/2025
Putrajaya Le Meridien	5 Star	€ 150.00	BREAKFAST	17/09/2025
Putrajaya Palm Garden	4 Star	€ 120.00	BREAKFAST	17/09/2025
Putrajaya Moxy	4 Star	€ 120.00	BREAKFAST	17/09/2025

Note: Kindly be advised that following the reservation deadline, the Malaysia Karate Federation cannot guarantee the availability of accommodation. A **minimum stay of three (3) nights** is required. Reservations made **after the stated deadline** will be subject to a **20% surcharge**. All rates quoted are **per room**.

The reservations for accommodation and transportation will be handled by the Malaysia Karate Federation (MAKAF) through the following email:

secretary@makaf.net

Contact Telephone number: +6062315819

Should you have any further inquiries please contact the Malaysia Karate Federation (MAKAF) through the above email or telephone number. Please note that all prices are in euro and are on a bed and breakfast basis. Should you need an extra meal on Half/Board or Full/Board basis request that through email. Note that all accommodation and transportation bookings must be fully paid to MAKAF to be considered as fully booked.

***Transport to the competition venue will only be provided to those who have booked accommodation through the official channel stated above.**

18.2 Transport Services

TRANSFER TYPE	PRICE/TRIP	ROUTE
1 Seat (Per Person)	€ 30.00	Airport > Hotel & Hotel > Airport

The above prices are from Kuala Lumpur International Airport (KLIA) Terminals 1 and 2 to hotels and back to the Airports (Round Trip). All travellers must enter Malaysia ONLY through the official Airports, which is Kuala Lumpur International Airports.

18.3 Meals at the Venue

Food trucks and stalls will be operating at the venue. If meals are offered by the stalls, you will be notified by September 17, 2025.

19. VISA REQUIREMENTS

<https://www.imi.gov.my/index.php/en/main-services/visa/visa-requirement-by-country/>

For further information, please reach out to the local organizing committee at secretary@makaf.net

20. CITY / COUNTRY INFORMATION

20.1 About Malaysia

Malaysia: A Dynamic Host Nation for International Sports

Malaysia is a vibrant, multicultural nation in Southeast Asia, where diverse ethnic groups—Malays, Chinese, Indians, and indigenous communities—live together in harmony. This rich cultural blend is reflected in the country's festivals, languages, traditions, and daily life. Visitors can witness this unity in colorful celebrations like Hari Raya, Chinese New Year, and Deepavali, and explore the nation's religious landmarks, traditional arts, and warm hospitality. From the iconic Petronas Twin Towers in Kuala Lumpur to the UNESCO-listed heritage streets of George Town, and the white-sand beaches of Langkawi to the rainforests of Borneo, Malaysia is full of diverse and exciting destinations. Adventure seekers can hike Mount Kinabalu, dive in Sipadan, or explore the jungles of Taman Negara. Food lovers will be spoiled by local flavors, from nasi lemak and satay to char kway teow and roti canai. Whether you're chasing adrenaline, cultural discovery, or culinary delight, Malaysia offers a dynamic and unforgettable travel experience.

Malaysia is also passionate about sports—badminton is a national favorite, with local heroes achieving international fame. Football, silat (traditional martial arts), and motorsports also draw enthusiastic crowds and reflect the nation's energetic spirit. Organizers of combat sporting events in Malaysia should be mindful of the predominantly Muslim population, which influences aspects like prayer times, halal food options, and dress codes in certain contexts, ensuring a respectful and inclusive environment for all attendees. Furthermore, the tropical climate, characterized by high humidity and occasional heavy rainfall, necessitates careful planning for outdoor events, including contingency plans and hydration strategies to ensure athlete welfare. Despite these considerations, Malaysia's robust infrastructure, including world-class venues and accessible transportation networks, makes it a capable host for international combat sports competitions, drawing on its experience from events like the World Karate Championships and various regional championships.

Malaysia's passion for sports, coupled with its scenic beauty, cultural richness, and logistical readiness, makes it an ideal host for the upcoming international karate tournament.

20.2 How to get to Malaysia

Kuala Lumpur International Airport (KLIA): This is Malaysia's largest and primary international gateway (KLIA Terminal 1 and KLIA Terminal 2), located in Sepang, Selangor. It offers excellent connectivity to major cities worldwide.

20.3 Practical Information

<https://www.malaysia.travel>

https://en.wikipedia.org/wiki/Kuala_Lumpur

20.4 Side Events

<https://www.malaysia.travel/events>

21. GENERAL INFORMATION

21.1 Currency and Exchange

Malaysia Ringgit (MYR)

21.2 Business Hours

In Malaysia, general business hours typically run from **9:00 AM to 5:00 PM** for most offices and private companies, operating on a standard Monday to Friday workweek. However, variations exist, particularly for government offices and certain states. For instance, government offices in Kuala Lumpur and Putrajaya generally open from 8:00 AM to 5:30 PM, Monday to Friday, while states like Kedah, Kelantan, and Terengganu observe a Sunday to Thursday workweek.

When it comes to **shopping experiences**, Malaysia truly comes alive with extended hours. Major shopping malls, a popular pastime and a significant part of the Malaysian lifestyle, usually operate from **10:00 AM or 11:00 AM until 10:00 PM** daily, including weekends and most public holidays. This allows ample time for visitors to explore the vast array of international brands, local boutiques, and dining options. Supermarkets also tend to follow similar late closing times. Smaller independent shops and roadside stalls might have more varied hours, often opening later and sometimes closing earlier, or operating into the night, especially at popular night markets (pasar malam) where bargaining is common.

21.3 Electricity

In Malaysia, the standard voltage is **240 V** and the frequency is **50 Hz**. You can use your electric appliances if their standard voltage is between 220-240 V (common in the UK, Europe, Australia, and most of Asia and Africa). Malaysia uses **Type G** power sockets (three rectangular pins).

For devices with different voltages (e.g., 100-120 V), you'll need a **voltage converter** in addition to a plug adapter. However, most modern electronics are "dual voltage" (100-240V), requiring only a **Type G plug adapter**. Always check your device's label for compatibility.

21.4 Local Law

https://en.wikipedia.org/wiki/Law_of_Malaysia

21.5 Vehicle Driving

Vehicles are right hand drive and driving is done on the left side of the road.

21.6 Alcohol

Alcohol will not be served by the organisation and is strictly prohibited on the sporting grounds. Visitors may purchase alcohol otherwise.

21.7 Tobacco

No smoking or vaping is allowed in inside areas at any venue

21.8 Safety in the city

Crime against visitors is not common in Malaysia, but the usual common-sense rules apply around keeping your belongings safe in your hotel room and when out in restaurants and bars.

Emergency Contact: **999**

Nearest Hospital: The closest hospital to N9 Arena in Nilai, Negeri Sembilan, Malaysia, is **Aurelius Hospital Negeri Sembilan**, located at PT 13717, Jalan BBN 2/1, Bandar Baru Nilai, 71800 Nilai, Negeri Sembilan, Malaysia. It is approximately 3.5 km away from the arena.

22. OMISSIONS

As regards that the specific items are not expressly foreseen in the present bulletin reference is to be made to the general rules and guidelines contained in WKF Regulations.



KUALA LUMPUR 2025

